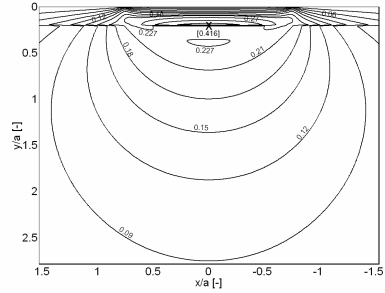
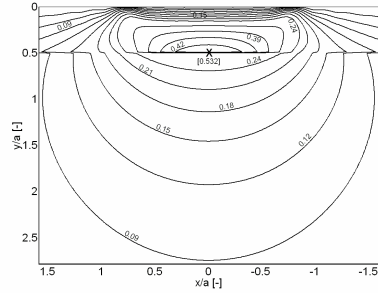


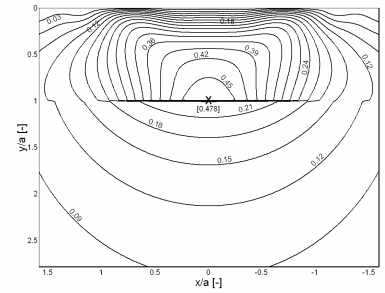
Principal shear stresses:



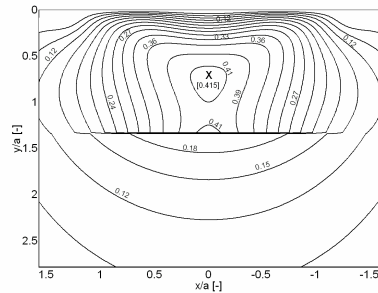
a) $d=5$



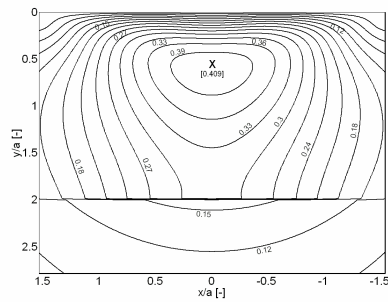
b) $d=2$



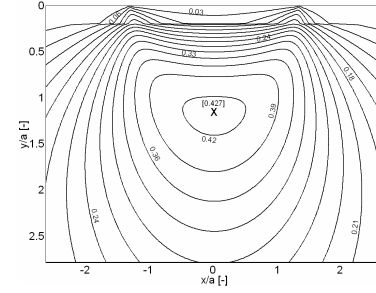
c) $d=1$



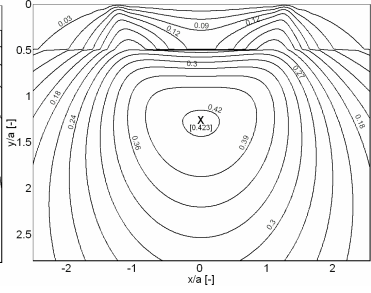
d) $d=0.75$



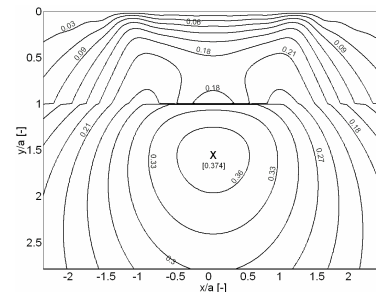
e) $d=0.5$



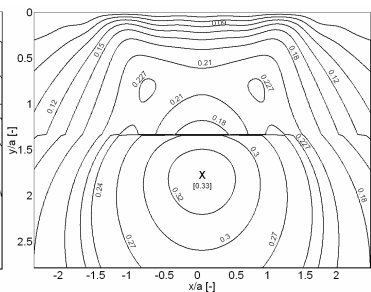
a) $d=5$



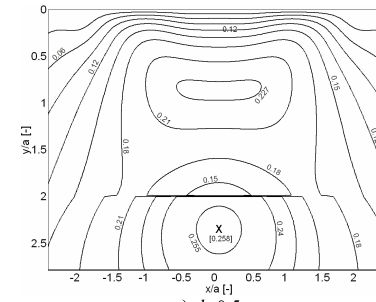
b) $d=2$



c) $d=1$



d) $d=0.75$



e) $d=0.5$

The influence of layer thickness over the principal shear stresses
hard layer ($Q=2$)

The influence of layer thickness over the principal shear stresses
soft layer ($Q=1/2$)