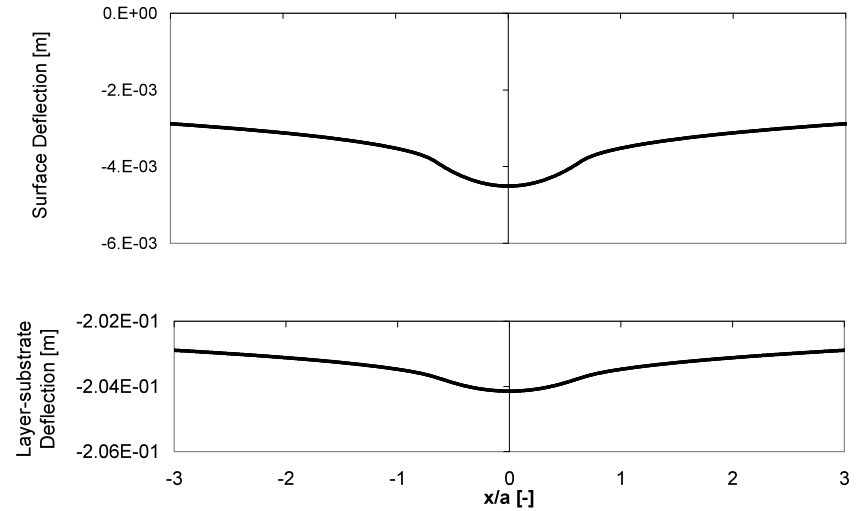
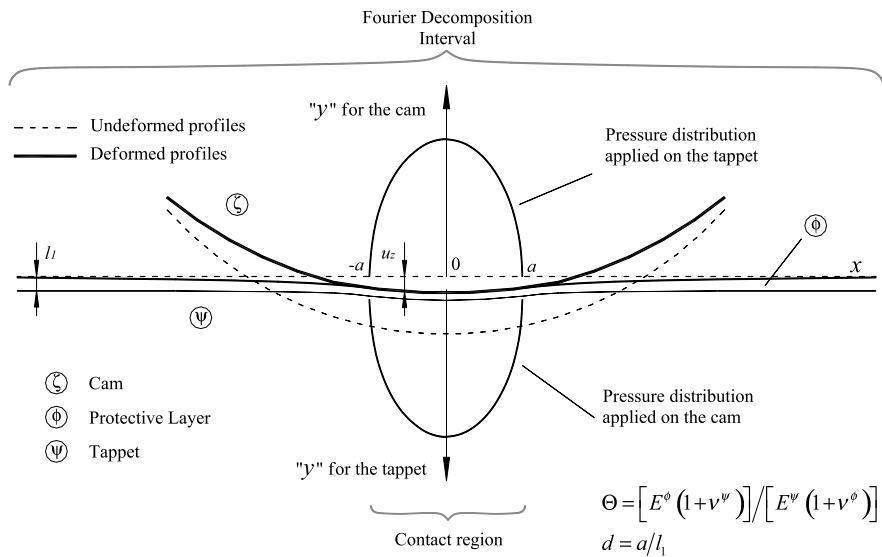
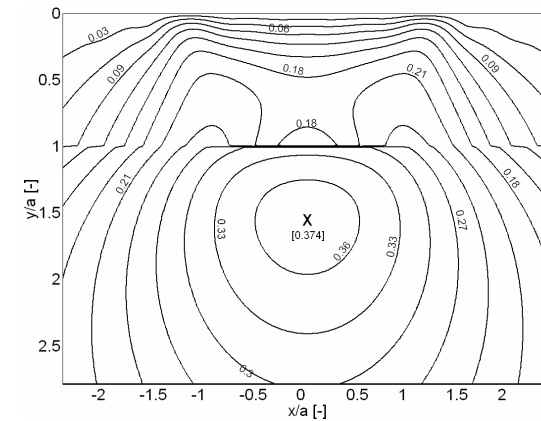


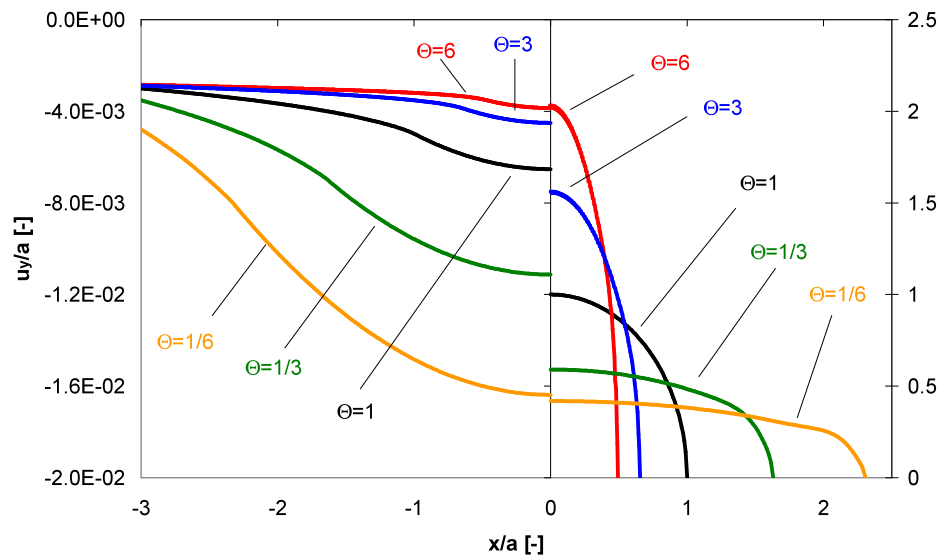
# Contact mechanics of layered solids:



Top surface and Layer-subsurface interface deformations ( $Q=2$  and  $d=5$ )



Sub-surface stress field  $Q=1/2$  and  $d=1$



Contact pressures and deflections for the different values of  $Q$  and  $d=5$

- "Harmonic Decomposition Analysis of Contact Mechanics of Bonded Layered Elastic Solids", Applied Mathematical Modelling, Vol. 33 (1), pp. 467-485 (2009)
- "Mathematical modelling of layered contact mechanics of cam-tappet conjunction", Applied Mathematical Modelling. Elsevier Science Vol. 31, pp. 2610-2627 (2007)