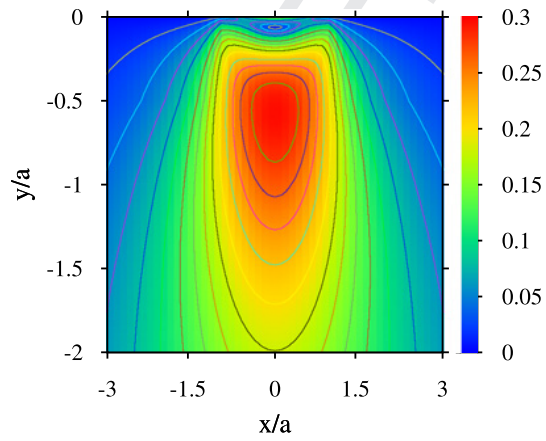
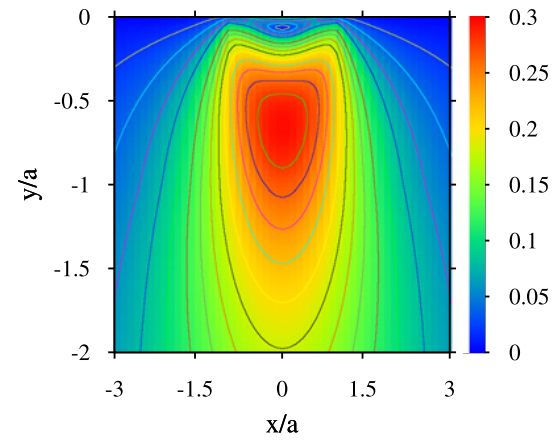


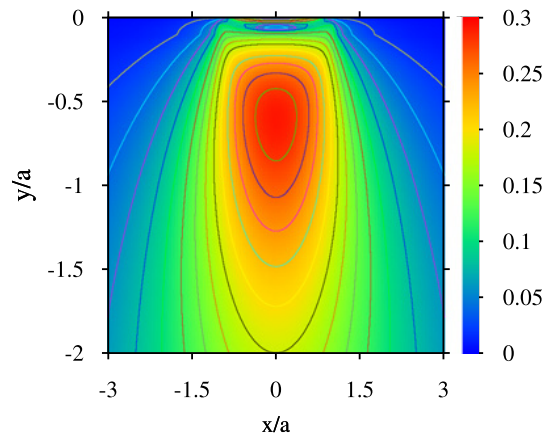
(a)  $\mu_1/\mu_0 = 1.5; \hat{h} = 0.1$



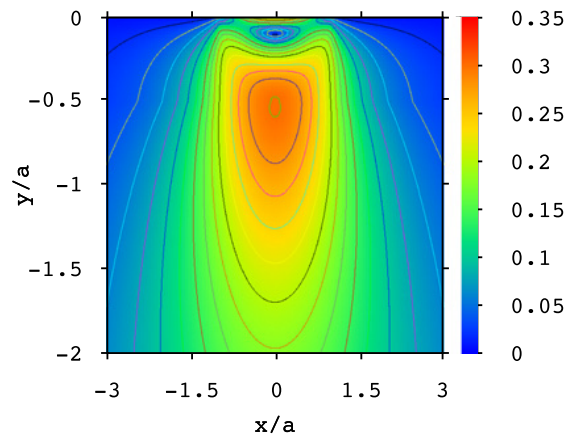
(b)  $\mu_1/\mu_0 = 1.5; \hat{h} = 0.5$



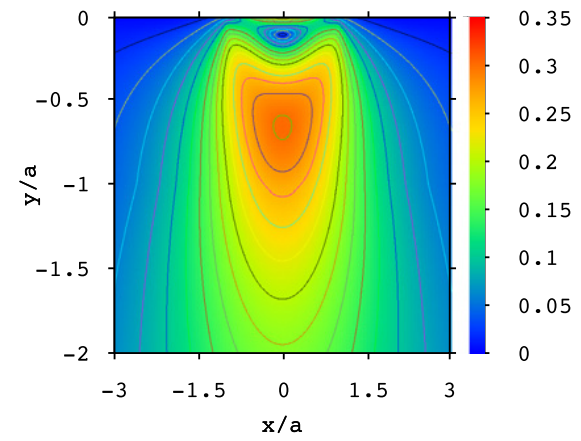
(c)  $\mu_1/\mu_0 = 1.5; \hat{h} = 1$



(d)  $\mu_1/\mu_0 = 2; \hat{h} = 0.1$



(e)  $\mu_1/\mu_0 = 2; \hat{h} = 0.5$



(f)  $\mu_1/\mu_0 = 2; \hat{h} = 1$

Contour plots of the sub-surface stress field for hard coatings that soften beneath the surface.